

**PLEASE READ THE ENTIRE INSTRUCTION SHEET BEFORE STARTING INSTALLATION.**

PLEASE REFER TO THE OPERATORS MANUAL FOR YOUR SPECIFIC GRAIN CART FOR PERTINENT SAFETY PRECAUTIONS THE TERMS. "LEFT", "RIGHT", "FRONT", & "REAR" ARE DETERMINED BY FACING IN THE DIRECTION THE GRAIN CART WILL TRAVEL WHEN IN USE.

**IMPORTANT:**

Before you begin installation, compare the contents with the enclosed "Packing Slip" to confirm that you have received the correct panels and associated hardware for your grain cart. Please refer to the operators manual for pertinent safety precautions.

1. Remove the horizontal auger. To do this remove the 10 bolts in the back of the cart and remove the bearing plate. Once the bearing plate is removed, the auger will slide out. The bearing plate is not attached to the auger with any fasteners so take care to not drop the plate once the bolts are removed.



2. Once the auger is removed, the shield over the auger has to be removed. We recommend doing this by crawling into the cart through the back. If you are unable to do this remove the upper wire mesh grates to access the shield. The shield is bolted to the floor of the cart as well as to the front of the cart. Also remove the 4 bolts that splice the shield together in the middle.



3. Once the shield is unbolted raise the shield up to the grate and secure in place.

**Visit us online at [www.lundellplastics.com](http://www.lundellplastics.com) to see other innovative products!**

## KINZE 1050 LINER EXOPLATE INSTALLATION INSTRUCTIONS



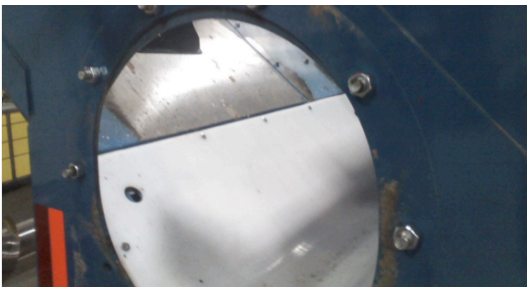
4. Slide the notched liner into the cart through the rear opening. Insert the notched end first. Slide the liner all the way forward until the notches hit the front auger housing.



5. Fasten the front edge of the liner with 4 of the stainless steel rivets. All of the holes are predrilled in the liner so use that as a guide to drill through the floor. Use a 3/16" diameter drill bit.



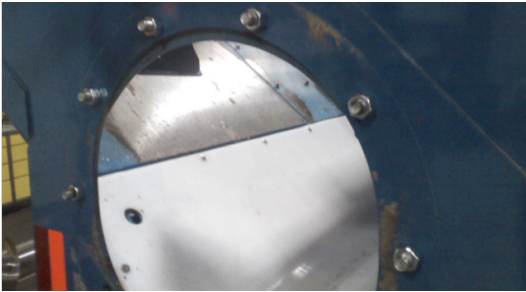
6. Continue drilling the holes along the top edge of the liner with the 3/16" drill bit and install the aluminium rivets. Once the top edge is completely fastened fasten the back edge with 4 stainless steel rivets.



7. Slide the back section with the correct bevel forward so it overlaps the front section. Install rivets in the back section using the same steps as the front section.

**Visit us online at [www.lundellplastics.com](http://www.lundellplastics.com) to see other innovative products!**

## KINZE 1050 LINER EXOPLATE INSTALLATION INSTRUCTIONS



8. Spot weld the top 6 bolts for the bearing plate into the cart.



9. Reinstall the auger shield. The angle brackets that hold the shield in place on the front of the car will need to be loosened and slid up to allow for the thickness of the liner.



10. Reinstall the horizontal auger leaving out the clean out slide.

***Visit us online at [www.lundellplastics.com](http://www.lundellplastics.com) to see other innovative products!***